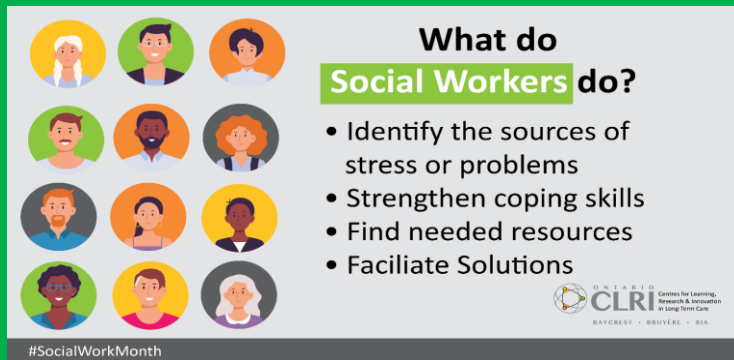


Welcome from your School Social Worker



My name is **Dr. Lydia D. Frazier** and I am your School Social Worker for the 2025-2026 academic year.

A Little About Me: I have worked collectively in the fields of education and social work for approximately 31 years. This is my ninth year as a school social worker in Richmond County Public Schools, and I am eager to serve the consumers of this county. Prior to becoming a school social worker, I taught high school English and Special Education for 12 years at Burke County High School in Waynesboro, Georgia.

Assigned Schools

Lamar Milledge Elementary School (Home School)
Meadowbrook Elementary School
Richmond County Technical and Magnet School



Examples of Services Provided to Students, Families, Faculty and Staff

- Academic Support Services
- Social, Emotional and Behavioral Support
- School Supplies
- Clothing Assistance
- Homeless Assistance and Advocacy
- Childcare assistance referrals
- Assist with accessing medical services (ie., dental, medical, eye)
- Early education intervention
- Utility and/or Rental Assistance Referral
- Crisis/Mental health assistance
- Relationship Issues/Domestic Violence
- School Issues for Child (behavioral, academic, attendance, small groups)
- www.csraeo.org – Click here to access multiple resources listed above including food options.

I look forward to working collaboratively with each one of you and providing exceptional service to the students and families of Richmond County Public Schools.

 **For School Personnel: How to submit a School Social Work Concern**

- ❖ Log into Infinite Campus, SWARM, Concern, Create New Concern
- 👤 I can be reached by email at dunnly@richmond.k12.ga.us
- 👤 Parents/Guardians -Notify your child's teacher or contact the front office of your child's school for needed services.